

nextar 

Take Your Pictures Anywhere



Item#N3-506

INSTRUCTION MANUAL
3.5" DIGITAL PHOTO ALBUM

TABLE OF CONTENTS

Safety precautions.....	3
Introduction.....	3
Features	4
Packaging Check List.....	4
Product Diagram.....	4
Charge the battery.....	5
Using Your Digital Photo Frame	9
Technical Notes.....	133
Question/Trouble-shooting Guide	143
Specifications	15
FCC Compliance	166

Safety precautions

- 1) Use only the supplied Input 100-240V, Output 5V adapter.
- 2) Turn off power before cleaning. Use only a soft cloth to clean the unit. Do not use liquid cleaners.
- 3) Avoid exposing the unit to extreme heat.
- 4) Disassembling the Digital Photo Frame may result in electric shock and will void your warranty.

Introduction

Your new Digital Photo Frame is a convenient and innovative way to display your digital photos. With it, you can easily view digital photos directly from your camera's memory card; no computer or printer required.

It supports all of the most popular memory card types on the market, including SD, MMC and MS. The Digital Photo Frame is light and portable; take it with you anywhere to share photos with family and friends.

This Digital Photo Frame is a step beyond the traditional photo frame. View and keep on display tens or even hundreds of digital photos without the need to pay for printing.

Features

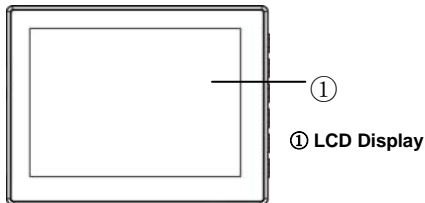
- Shows sharp photos on a 3.5 inch LCD display
- Supports SD, MMC MS memory card formats
- Displays photos from memory cards
- Renders in a smooth and clear resolution of 320X240 pixels
- Offers a variety of display features, including a slide show mode

Packaging Check List

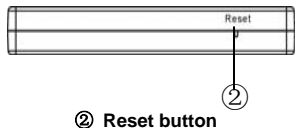
- Digital Photo Frame
- USB Cable
- User Manual
- Power Adaptor
- Wallet Holder
- Quick Start Guide

Product Diagram

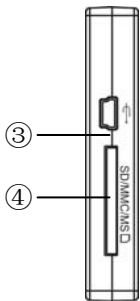
A. Front View



B. Bottom View



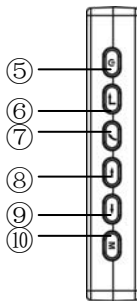
D. Left View



③ **USB Port:** Connect to a computer through the USB cable or to an electronic socket through the power adaptor

④ **Memory Card Slot:** Used for inserting an SD/MMC/MS card.

E. Left View



- ⑤ **POWER:** Press and hold to turn on or off the device.
- ⑥ **ENTER:** Confirm selection
- ⑦ **ESC:** Return to the previous screen.
- ⑧ **UP:** Go to the previous picture
- ⑨ **DOWN:** Go to the next picture
- ⑩ **MODE:** Start slide show

Charge the battery

The device features built-in rechargeable battery for portable use. It may take 3 hours to fully charge it, and each full charge can be used continuously for about 2.5 hours.

You can charge the battery by either of:

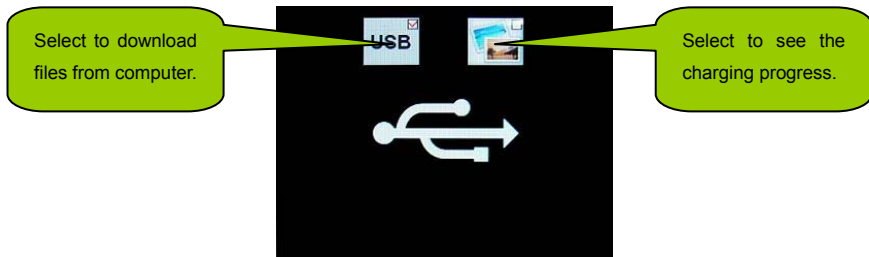
● Connecting to AC Adaptor

- (1) Connect the AC adaptor and the device with the USB cable.
- (2) Insert the AC adaptor to an electronic socket.



- **Connecting to Computer**

Connect it to a computer through the provided USB cable. The battery is charged once the connection is successful.



If you want to see the charging progress, press the **UP/DOWN** button to select the option at the right and then press the **ENTER** button to confirm. You should see an animating battery icon at the top right corner. The icon should stop animating once the charge is full.

Transfer files between computer and the device

- **Download photos from computer to the device**

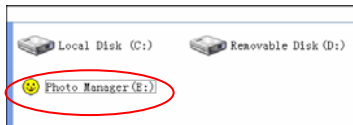
The device has built-in memory for the storing images. With the Photo Manager, you can transfer

image files between your computer and the unit.

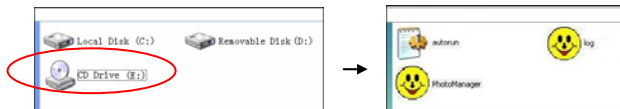
Step 1: Connect the unit to the computer through the provided USB cable.

Step 2: Press the UP/DOWN button to select the “USB” option and then press the **ENTER** button to confirm.

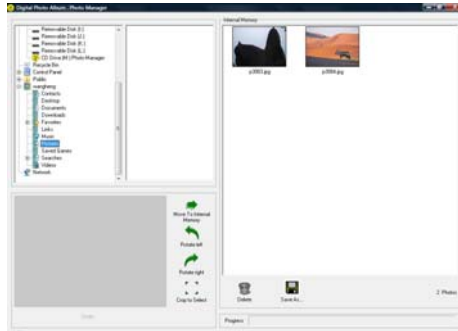
Step 3: A photo manager tool runs automatically (depending on your computer’s configuration.) If not, you can run it manually from the disk drive by (1) opening “My Computer”; (2) opening the disk drive named Photo Manager.



Note: Depending on the PC’s configuration, you may not see the Photo Manager disk drive when you enter “My Computer”. Instead, you see a CD Drive. Just double click the CD Drive to see the Photo Manager tool.



Step 3: When the Photo Manager is running, select the image files that you want from the left pane.



Step 4: Click the “Move To Internal memory” button to send the selected image files to the unit. Before moving, you can:

- Rotate the image left by clicking the “Rotate Left” button.
- Rotate the image right by clicking the “Rotate Right” button.
- Crop an area from the image by clicking the “Crop to Select” button.

Step 5: Wait for the transfer progress to complete before disconnecting the unit from the computer.

- **Upload photos from the device to computer**

With the Photo Manager, you can also copy images from the unit to the computer.

Step 1: Run the Photo Manager.

Step 2: In the right pane of the Photo Manager window, select the image file that you want.

Step 3: Click the “Save As” button to save the selected image file to the computer, or click “Delete” button to delete it.

Step 4: Wait for the transfer progress to complete before disconnecting the unit from the computer.

Using Your Digital Photo Frame

- **View photos from memory card or the internal memory**

Step 1: Power on the unit by holding the **POWER** button for a while.

Step 2: Download photos to the device or insert a memory card into the card slot at the left side of the unit (with the card’s electrical contacts facing the back of the unit.). **Please note if a card is inserted, only the photos stored in the card can be viewed.**

Step 3: Press the **UP** or **DOWN** button to select “**Play Photos**” on the main menu, and press the **ENTER** button to enter the photo viewer mode.

Step 4: You will see thumbnails of all photos stored in the card.

- Press the **MODE**, **UP**, and **DOWN** buttons to select a thumbnail. Press the **ENTER**

button to confirm the selection and enlarge the selected photo to fill the screen.

Step 5: In full-screen mode (Single Show Mode):

- Press the **MODE** button to start the automated slide show. In slide show mode, you can press the **MODE** button repeatedly to set the time interval between slides. Press the **ESC** button to stop slide show and return to the thumbnail view. Press the **ENTER** button to enter the Single Show mode.
- Press the **UP** and **DOWN** buttons to display the Previous/Next photo.
- Press and hold the **ENTER** button to rotate the photo 90° counter-clockwise.
- Repeatedly press the **ENTER** button to zoom in the picture up to 4X. When the photo is zoomed in, you can roam on the photo by pressing the **UP**, **DOWN**, **MODE**, and **ESC** button.
- Press the **ESC** button to return to thumbnail mode.

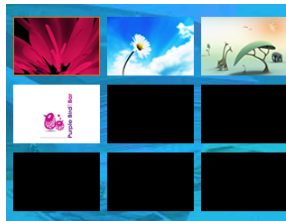
● Copy files from the card to the device

You can copy image files from the memory card directly to the built-in memory.

Step 1 In the main menu, select “**Manage Files**” by pressing the **UP** and **DOWN** buttons, and then press the **ENTER** button to confirm.



Step 2 Press the **UP** and **DOWN** buttons to select “**Copy One**” or “**Copy All**”, and then press the **ENTER** button to confirm. If you select “**Copy One**”, press the **MODE**, **UP** and **DOWN** button to select the picture that you want to copy and then press the **ENTER** button to confirm.



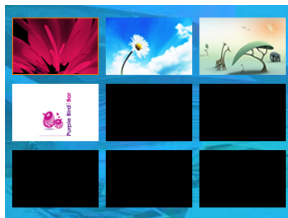
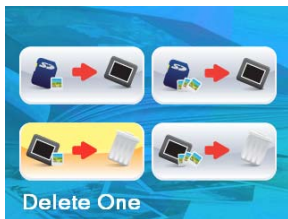
- **Delete files from the device**

To delete files which are stored in the built-in memory,

Step 1 On the main menu shown upon startup, select “**Manage Files**” by pressing the **UP** and **DOWN** buttons and then press the **ENTER** button to confirm.



Step 2 Press the **UP** and **DOWN** buttons to select “**Delete One**” or “**Delete All**” and then press the **ENTER** button to confirm.





Technical Notes

1. Your Digital Photo Frame is a sophisticated electronic unit. Do not drop or subject the unit to jarring or strong vibrations.
2. Avoid placing the Digital Photo Frame in areas of high humidity or where it might be exposed to liquids.
3. The panel is made of plastic and is susceptible to damage. Avoid using sharp objects nearby.
4. Use only a soft, dry cloth to clean the screen.

Question/Trouble-shooting Guide

This chapter presents some suggestions to trouble-shoot any problems you may encounter while using the unit. Even if the following guide fails to solve your problem, please do not disassemble the unit; just refer the problem to our professional staff. Please see below for contact details.

1. Question: What kind of photos does this unit support?

Answer: The Frame will display digital photos that are stored in the JPEG format, which is the standard format for nearly all digital cameras. Some cameras allow photos to be stored as TIFF or RAW files as well as JPEG, but only the JPEG format is compatible with the Frame.

2. Question: What should I do if the system does not respond when the unit is turned on?

Answer: Please make sure the unit is properly connected to a power source. If so, turn the unit off, reconnect the power and turn it on again.

3. Question: What should I do if the device does not respond?

Answer: Press the **RESET** button to restart the device.

4. Question: Why is the memory card not recognized?

Answer: The memory card might be inserted improperly or not pushed in all the way. If the card is inserted in the right direction and is still not recognized, turn off the unit, remove and reinsert the card, and start again.

Specifications

Panel Size	3.5 inches TFT
Resolution	320 x 240
File Format Type	JPEG
Max. Photo Size	16 megapixels
Power Requirement	5V DC
Operating Temperature	-10~55 Centigrade, 14~131 Fahrenheit
Storage Temperature	-20~55 Centigrade, -4~131 Fahrenheit

This manual was correct and complete at the time of printing. However, specifications and updates can occur at any time without prior notice. No part of this manual may be copied, republished, reproduced, transmitted, or distributed in any way without the prior written consent of Nextar, Inc. Any unauthorized distribution of this manual is expressly forbidden.

FCC Compliance

This device complies with Part 15 of the FCC Rules. Operation is subject to the following two conditions: (1) this device may not cause harmful interference, and (2) this device must accept any interference received, including interference that may cause undesired operation.

Note: This equipment has been tested and found to comply with limits for Class B digital devices, pursuant to part 15 of the FCC Rules. These limits are designed to provide reasonable protection against harmful interference in a residential installation. This equipment generates, uses and can radiate radio frequency energy and, if not installed and used in accordance with the instructions, may cause harmful interference to radio or television reception, which can be determined by turning the equipment off and on. The user is encouraged to try to correct the interference through one or more of the following measures:

1. Reorient or relocate the receiving antenna. 2. Increase the separation between the equipment and the receiver. Connect the equipment to an outlet on a circuit different from that to which the receiver is connected. 3. Consult the dealer or an experienced radio/TV technician for help.

Nextar™ is a trademark of Nextar (Hong Kong) Limited.

Nextar may find it necessary to modify, amend or otherwise change or update this manual. We reserve the right to do this at any time, without any prior notice. All specifications and features are subject to change without notice. All screen shots shown are simulated and may not represent the actual screen on production units sold to consumers.

For instruction manuals, updated drivers or other information, be sure to visit our website at:

www.nextar.com

Or write to us at:

© NEXTAR, INC. AND ITS AFFILIATES
1661 FAIRPLEX DRIVE
LA VERNE, CA 91750. USA

All products distributed by Nextar, Inc. unless otherwise indicated

Made in China

© 2008 Nextar (Hong Kong) Limited. Nextar is a trademark and service mark of Nextar (Hong Kong) Limited. All other brand names, trademarks and service marks are property of their owners.